

IN THE CIRCUIT COURT OF THE ELEVENTH JUDICIAL CIRCUIT  
IN AND FOR MIAMI – DADE COUNTY, FLORIDA

STATE OF FLORIDA, OFFICE OF  
FINANCIAL REGULATION,

GENERAL JURISDICTION DIVISION  
CASE NO.: 07-43672 CA 09

Plaintiff,

vs.

BERMAN MORTGAGE CORPORATION,  
a Florida corporation, M.A.M.C.  
INCORPORATED, a Florida corporation,  
DANA J. BERMAN, as Owner and Managing  
Member,

Defendants,

and,

DB ATLANTA, LLC, a Florida LLC, et al.,

Relief Defendants.

THE ORIGINAL  
FILED ON:

MAY 17 2011

IN THE OFFICE OF  
CIRCUIT COURT DADE CO., FL

**NOTICE OF FILING COLOR PHOTOGRAPHS OF UNITS 510, 803 AND 804**

Michael I. Goldberg, as Court Appointed Receiver over Defendants Berman Mortgage Corporation, M.A.M.C. Incorporated, et al., and Relief Defendants DB Atlanta LLC, et al, including Oceanside Acquisitions, LLC., (the "Receiver") by and through its undersigned counsel, hereby gives notice of filing the following:

1. Color Photographs of Unit 510 (Gulf Island Beach & Tennis Club I) attached hereto as **Exhibit A**.
2. Color Photographs of Unit 803 (Gulf Island Beach & Tennis Club I) attached hereto as **Exhibit B**.
3. Color Photographs of Unit 804 (Gulf Island Beach & Tennis Club I) attached hereto as **Exhibit C**.

**CERTIFICATE OF SERVICE**

I HEREBY CERTIFY that on this 17<sup>th</sup> day of May, 2011, a true and correct copy of the foregoing was furnished via U.S. Mail to the parties on the attached Service List.

Respectfully submitted,

**BERGER SINGERMAN**

*Attorneys for Receiver, Michael Goldberg*

1000 Wachovia Financial Center

200 South Biscayne Boulevard

Miami, Florida 33131

Phone: (305) 755-9500 / Fax: (305) 714-4340

By:



JAMES D. GASSENHEIMER

Florida Bar No. 959987

[jgassenheimer@bergersingerman.com](mailto:jgassenheimer@bergersingerman.com)

MONICA F. ROSSBACH

Florida Bar No. 13641

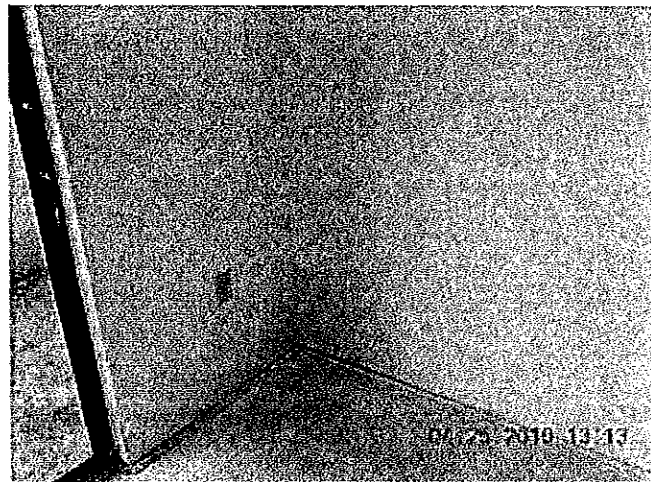
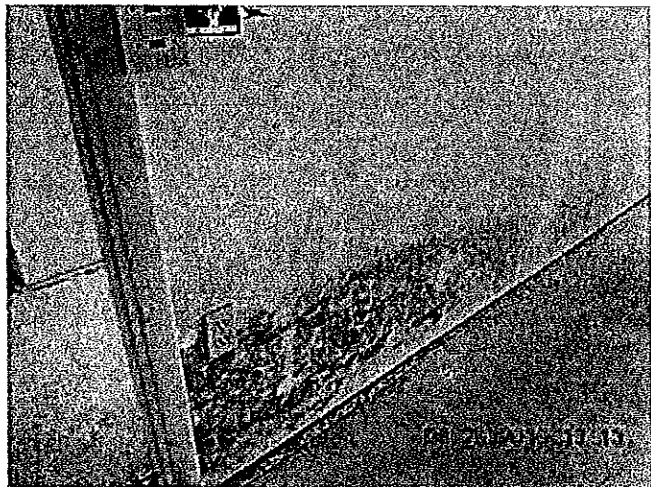
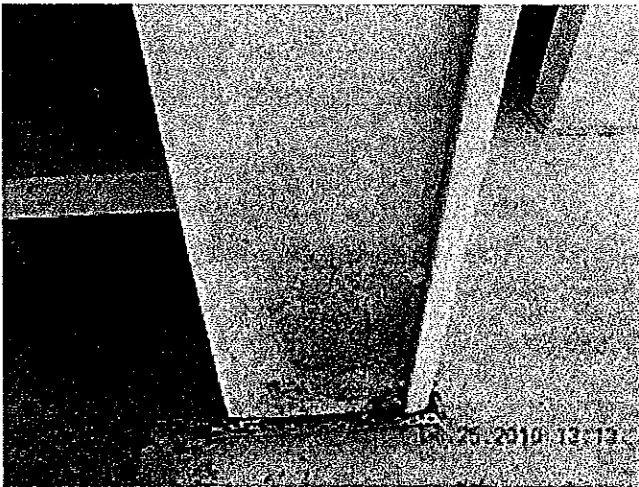
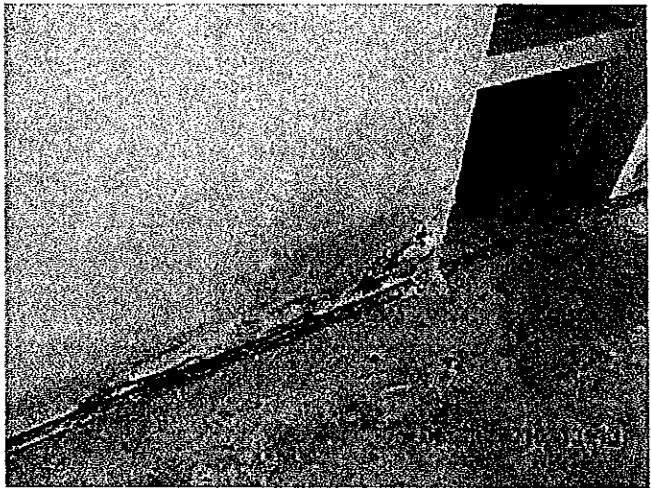
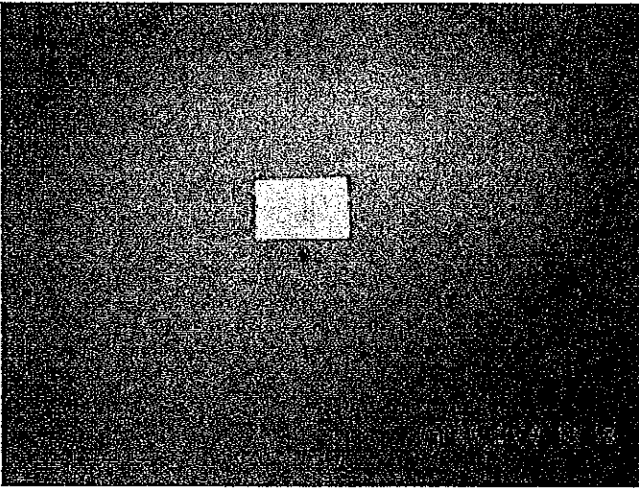
[mrossbach@bergersingerman.com](mailto:mrossbach@bergersingerman.com)

SERVICE LIST

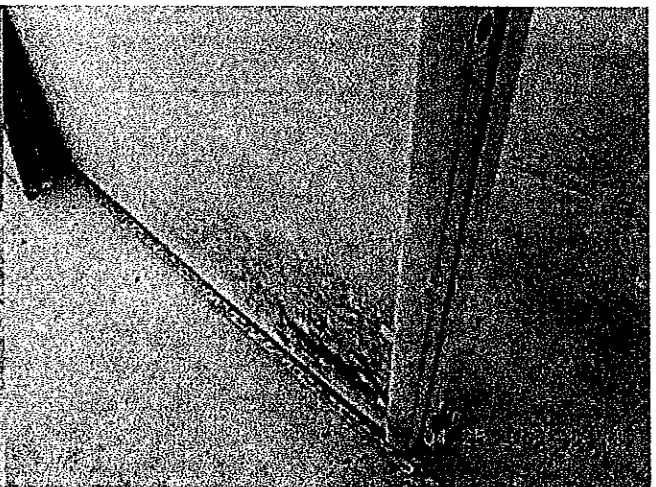
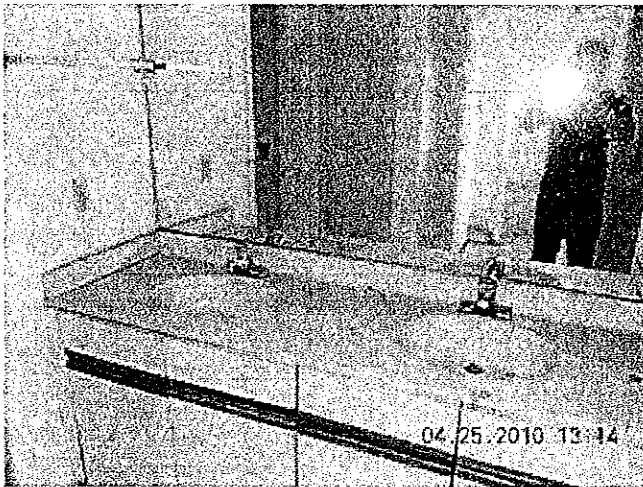
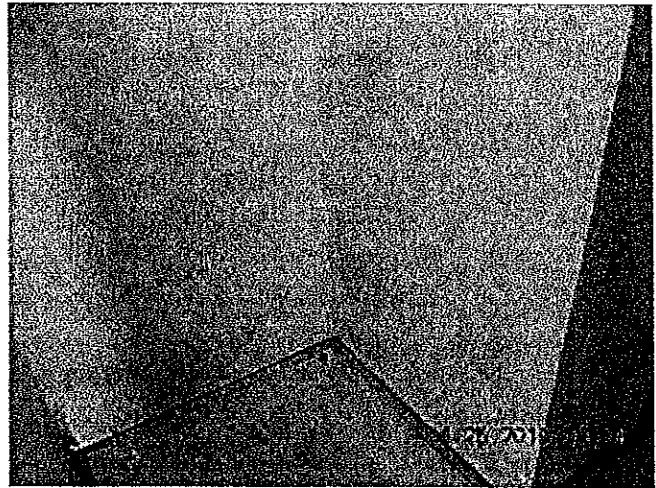
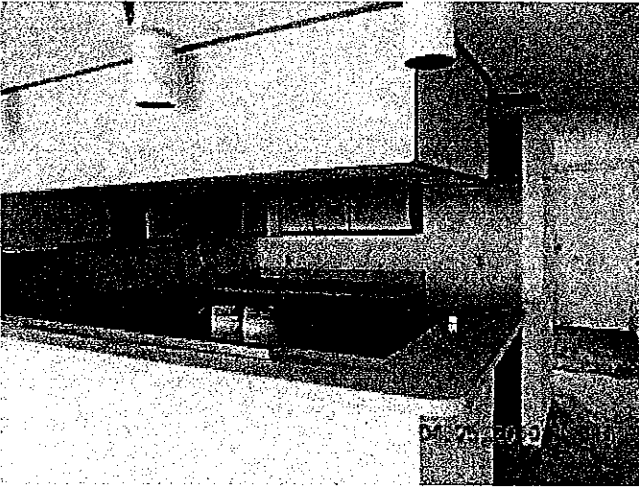
<b>Cristina Saenz</b> <b>Assistant General Counsel</b> STATE OF FLORIDA OFFICE OF FINANCIAL REGULATION 401 N.W. 2 <sup>nd</sup> Avenue, Suite N-708 Miami, FL 33128	<b>Alan M. Sandler, Esquire</b> SANDLER & SANDLER 117 Aragon Avenue Coral Gables, FL 33134
<b>Charles W. Throckmorton, Esquire</b> <i>Attorneys for Dana Berman</i> KOZYAK TROPIN THROCKMORTON, P.A. 2525 Ponce de Leon Boulevard, 9 <sup>th</sup> Floor Coral Gables, FL 33134	<b>Paul Huck, Esquire</b> <b>Dean C. Colson, Esquire</b> COLSON HICKS EIDSON 255 Aragon Avenue, Second Floor Coral Gables, FL 33134
<b>Jason S. Miller, Esquire</b> <i>Counsel for Flagstar Bank</i> ADORNO & YOSS, LLP 2525 Ponce de Leon Boulevard, Suite 400 Coral Gables, FL 33134	<b>Maurice Baumgarten, Esquire</b> ANANIA, BANDKLAYDER, BLACKWELL, BAUMGARTEN, TORRICELLA & STEIN Bank of America Tower – Suite 4300 100 SE 2 <sup>nd</sup> Street Miami, FL 33131
<b>Mark A. Basurto, Esquire and Charles Evans Glausier, Esquire, Attorneys for Gulf Island Beach and Tennis Club Condominium Association, Inc.</b> BUSH ROSS, P.A. Post Office Box 3913 Tampa, Florida 33601-3913	<b>Charles L. Neustein, Esquire</b> CHARLES L. NEUSTEIN, P.A. 777 Arthur Godfrey Road, Second Floor Miami Beach, FL 33140
<b>William Dufoe, Esquire</b> <b>Robert W. Lang, Esquire</b> HOLLAND & KNIGHT, LLP 100 North Tampa Street, Suite 4100 Tampa, FL 33602	<b>Deborah Poore Fitzgerald, Esquire</b> WALTON LANTAFF SCHROEDER & CARSON, LLP Corporate Center, Suite 2000 110 East Broward Boulevard Fort Lauderdale, FL 33301
<b>Peter Valori, Esquire</b> DAMIAN & VALORI, LLP 1000 Brickell Avenue, Suite 1020 Miami, FL 33131	<b>Christopher S. Linde, Esquire</b> BURR FORMAN 450 S. Orange Avenue Suite 200 Orlando, Florida 32801

cc: The Honorable Jerald Bagley *(via Hand-Delivery)*  
Michael Goldberg, Esq., as Receiver *(via e-mail)*  
The Investor(s)/Lender(s) Group *(via e-mail)*  
Posted to the Berman Mortgage Website

Unit 510 (April 25, 2010)



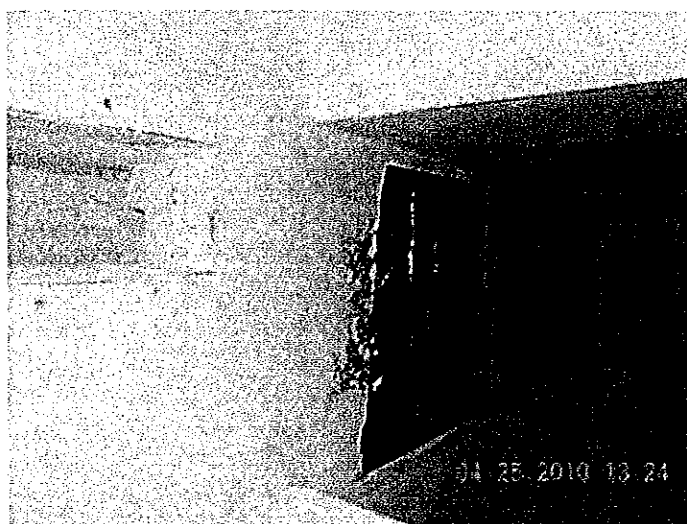
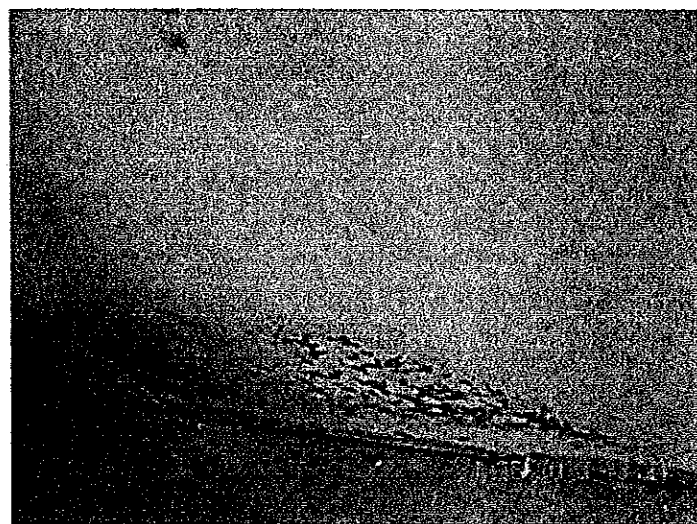
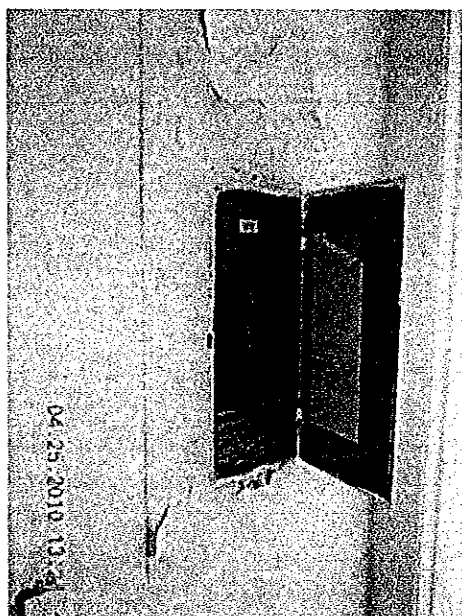
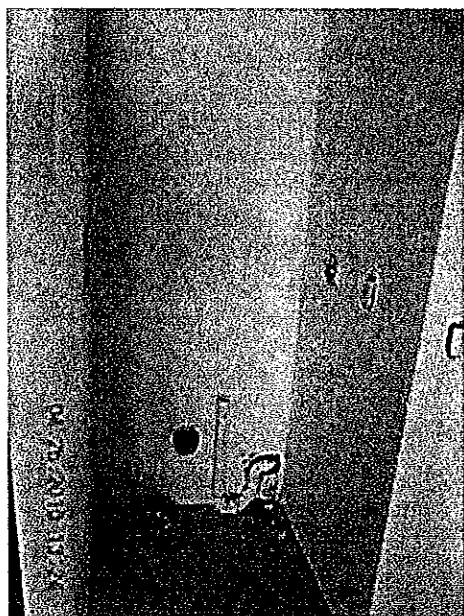
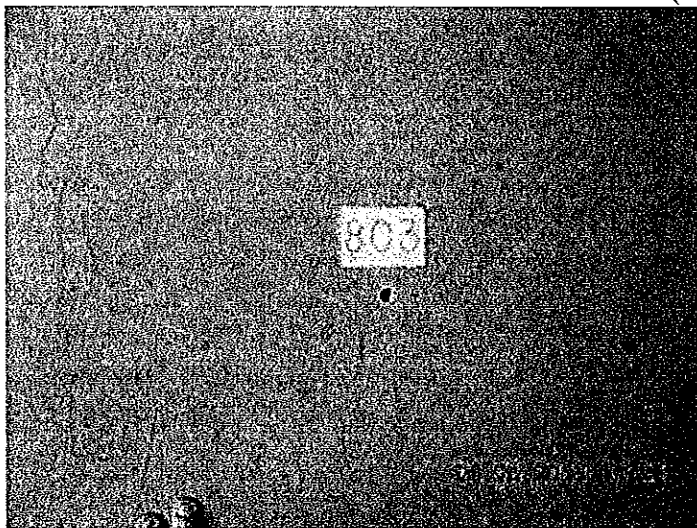
tabbles	EXHIBIT
	<u>A</u>

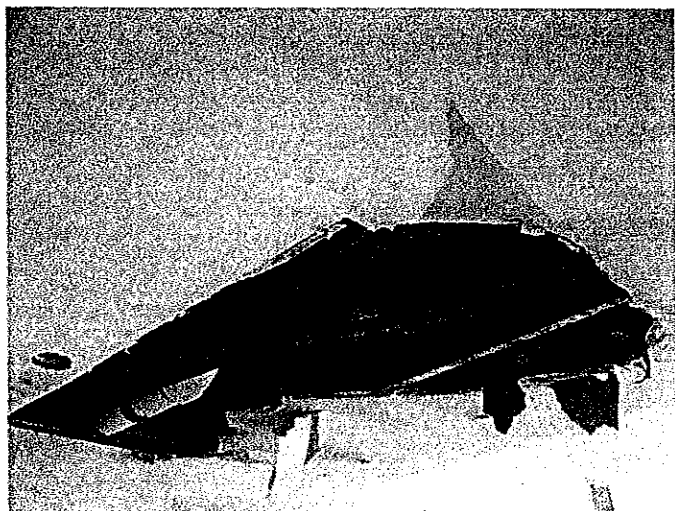
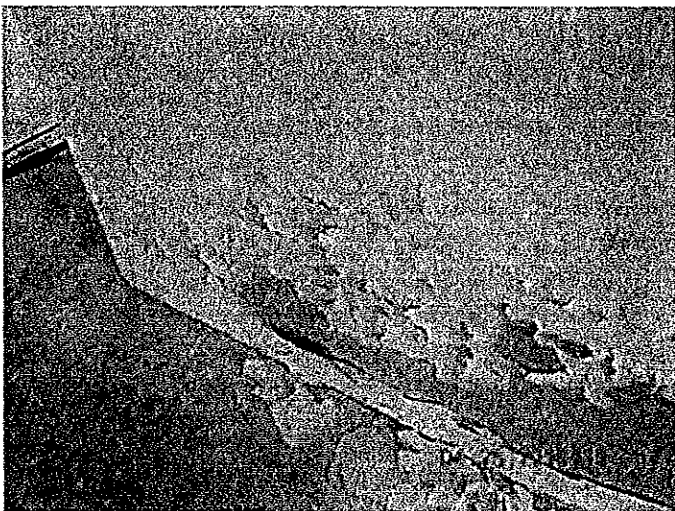
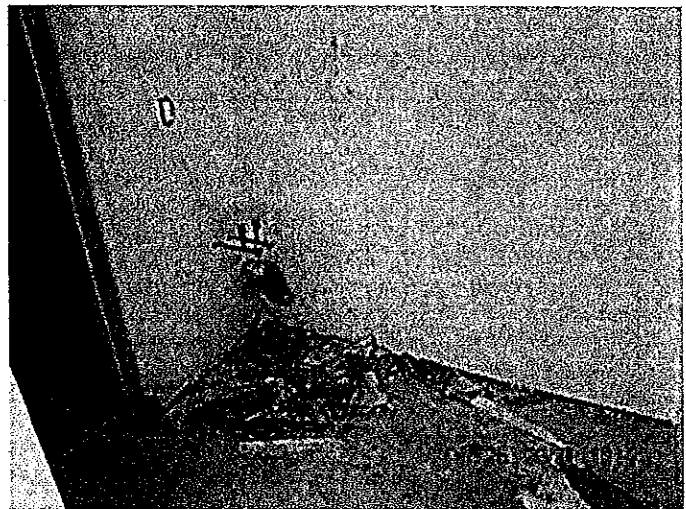
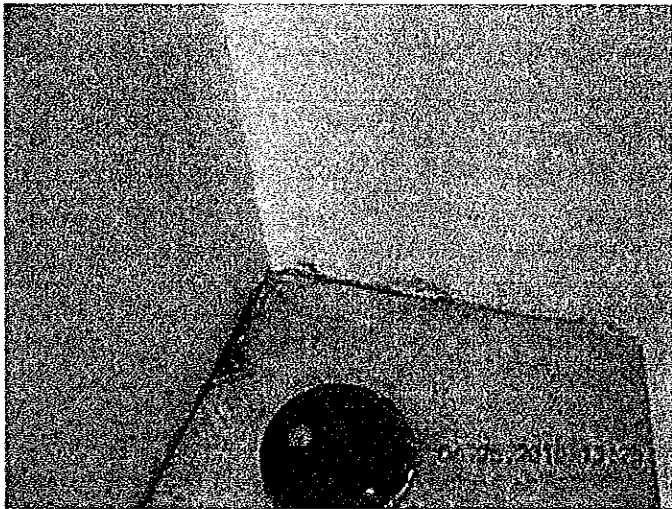
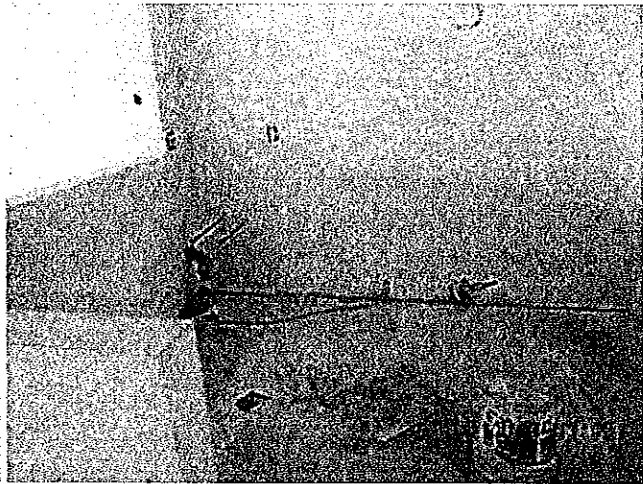
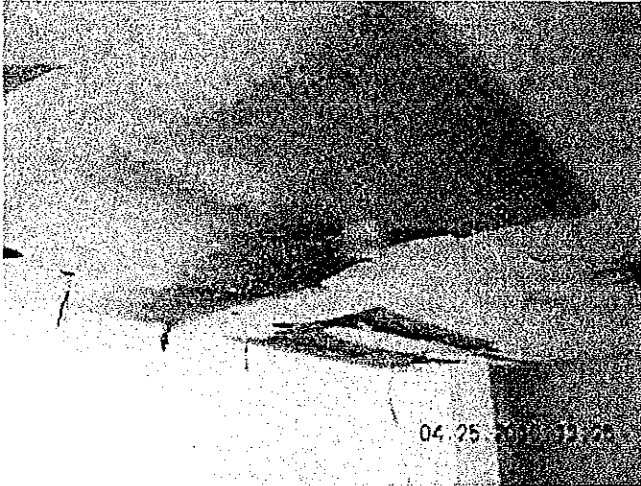




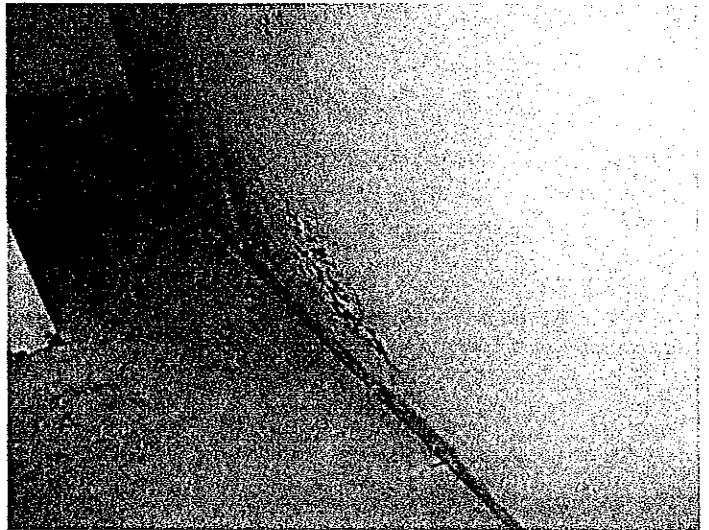


Unit 803 (April 25, 2010)

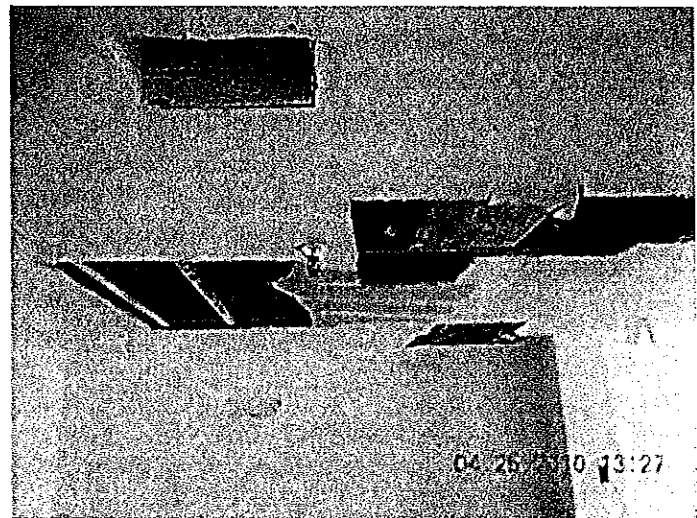
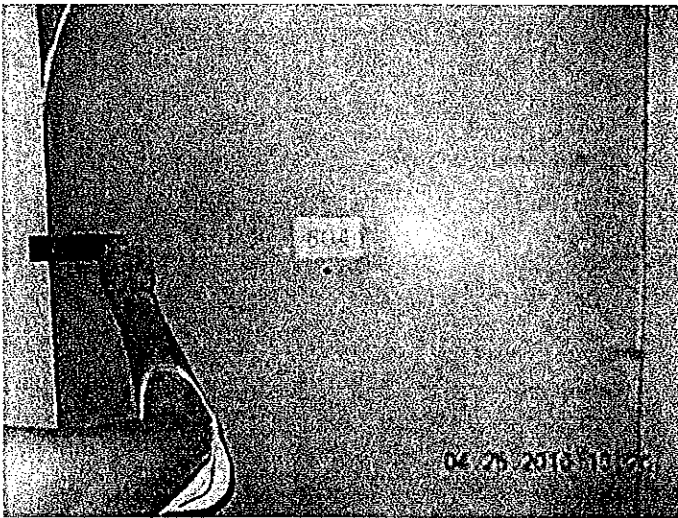




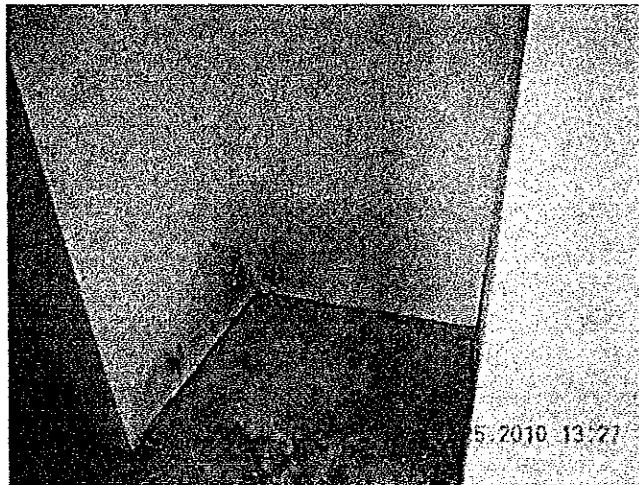
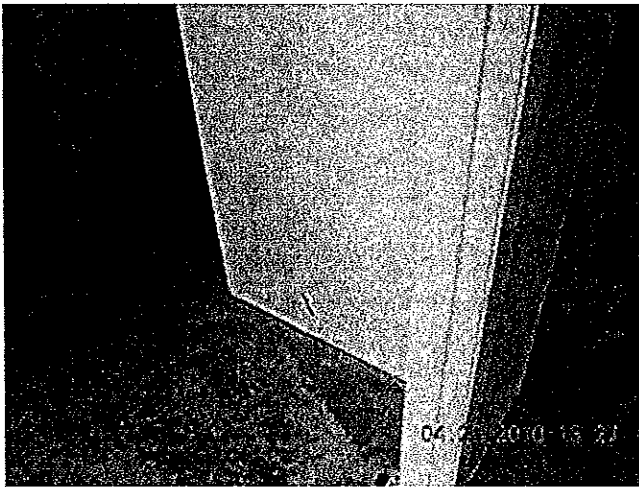
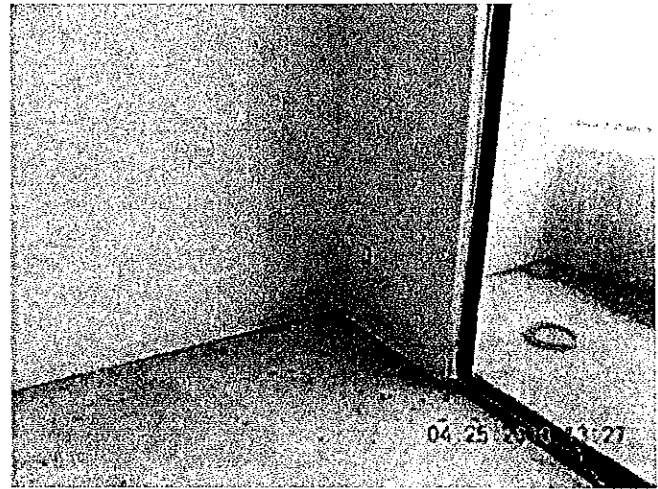








Unit 804 (April 25, 2010)



Pictures on this page were taken July 2009

